

1760 MARKET STREET PHILADELPHIA, PA

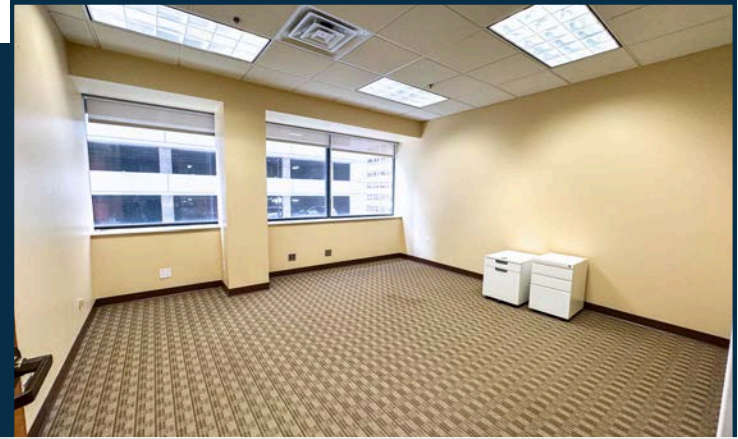
17
60
MKT

SUITE 404 | 1,016 RSF

PRIVATE OFFICES WITH VIEWS OF 18TH STREET



OPEN RECEPTION AREA



TWO PRIVATE OFFICES

SPACE HIGHLIGHTS



Large windows with an abundance of natural light overlooking 18th Street



Two private offices and large open reception area

SUITE 404
VIRTUAL TOUR



BUILDING FEATURES

- Sophisticated boutique environment
- On-site building management
- Keystone Innovation Zone opportunity
- Tenant lounge and building conference center
- Designated bike room
- 24/7 manned security desk



ADDITIONAL BUILDING ENHANCEMENTS PLANNED

NOW UNDER NEW OWNERSHIP



STOCKTON
REAL ESTATE ADVISORS

PRIME MARKET STREET LOCATION AT THE LOWEST MARKET (STREET) RATE!

- Column-free floor plates providing maximum efficiency and flexible open floor plans.
- Unparalleled connectivity with easy access to Suburban Station, I-676, I-76, and I-95. Conveniently located minutes from PATCO Speedline and 30th Street Station.



TENANT LOUNGE & CONFERENCE ROOM

BUILDING AMENITIES

- Conference Center
- Bike Storage
- On-Site Management
- Tenant Lounge
- On-Site Banking
- 24/7 Security

Prime corner office building located directly on Philadelphia's "Pedestrian Highway"

RETAIL
NEW & COMING SOON

- EQUINOX
- Levain
- GLOWBAR
- WORLD OF FLIGHT
- ARITZIA
- FIGS
- SKIN LAUNDRY
- FLIGHT CLUB
- ayat
- Lucy's
- Reformation

Map details include: 1760 MKT (highlighted in pink), 18th Street Pedestrian Highway, Market Street, 15th Street Station, Dilworth Park, City Hall, Broad Street Line, Chestnut Street, Sansom Street, Walnut Street, Locust Street, Rittenhouse Square (highlighted in green), and various retail and dining establishments like Anthropologie, HipCityVeg, and Bar Bombón.

WALK SCORE
100

TRANSIT SCORE
100

BIKE SCORE
82

Nearby Amenities

- Parking
- Hotels
- Gyms

Jacklyn Hadzor
609.760.9985
jhadzor@StocktonREA.com

Stockton Real Estate Advisors, LLC
1760 Market Street, Suite 900, Philadelphia, PA
215.636.4444 | www.StocktonREA.com

