

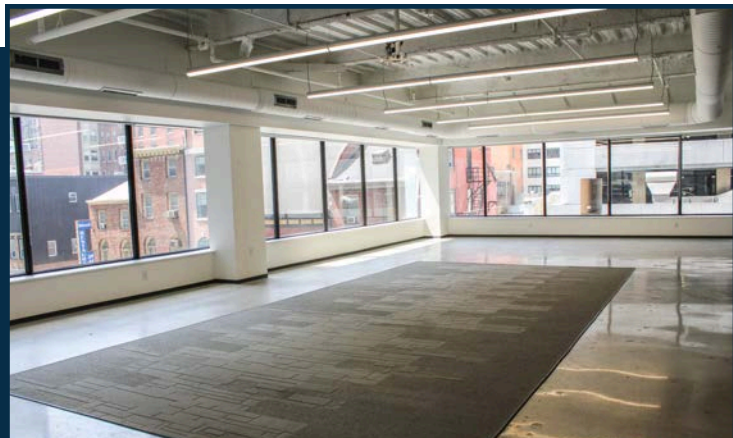
1760 MARKET STREET

PHILADELPHIA, PA

1760
MKT

SUITE 300 | 9,152 RSF

HIGH-END, SINGLE FLOOR TENANT







FLEXIBLE, OPEN WORK AREA



LARGE CONFERENCE ROOM

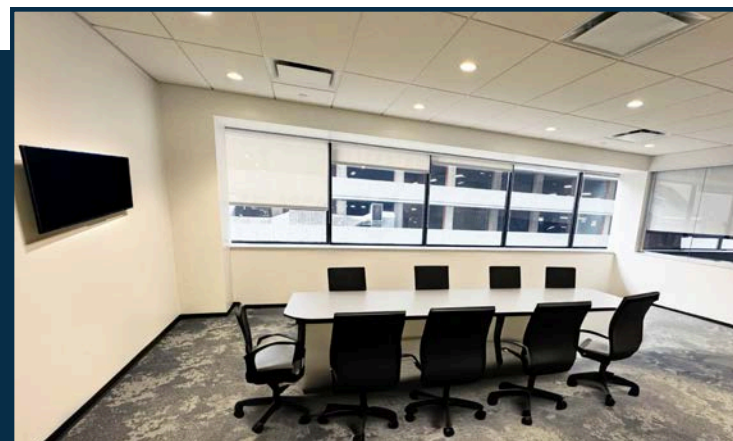
SPACE HIGHLIGHTS

-  Flexible, column-free, layout with open work area, 2 large conference rooms, full kitchen
-  Fully built-out, high-end, full-floor suite ideal for tech users
-  Polished concrete floors and exposed ceilings
-  Streetscape views of Market Street and City Hall

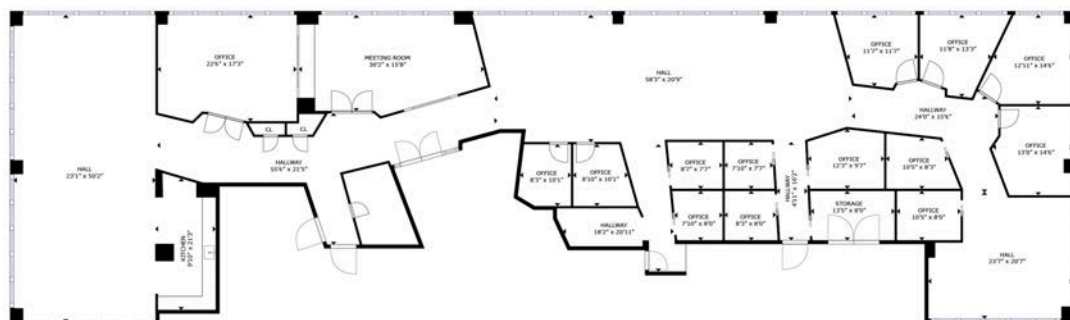
SUITE 300
VIRTUAL TOUR



CORNER OFFICE



CONFERENCE ROOM



FLOOR PLAN



STOCKTON
REAL ESTATE ADVISORS

17
60
MKT

PRIME MARKET STREET LOCATION AT THE LOWEST MARKET (STREET) RATE!

- Column-free floor plates providing maximum efficiency and flexible open floor plans.
- Unparalleled connectivity with easy access to Suburban Station, I-676, I-76, and I-95. Conveniently located minutes from PATCO Speedline and 30th Street Station.

NOW UNDER NEW OWNERSHIP ADDITIONAL BUILDING ENHANCEMENTS PLANNED



TENANT LOUNGE & CONFERENCE ROOM

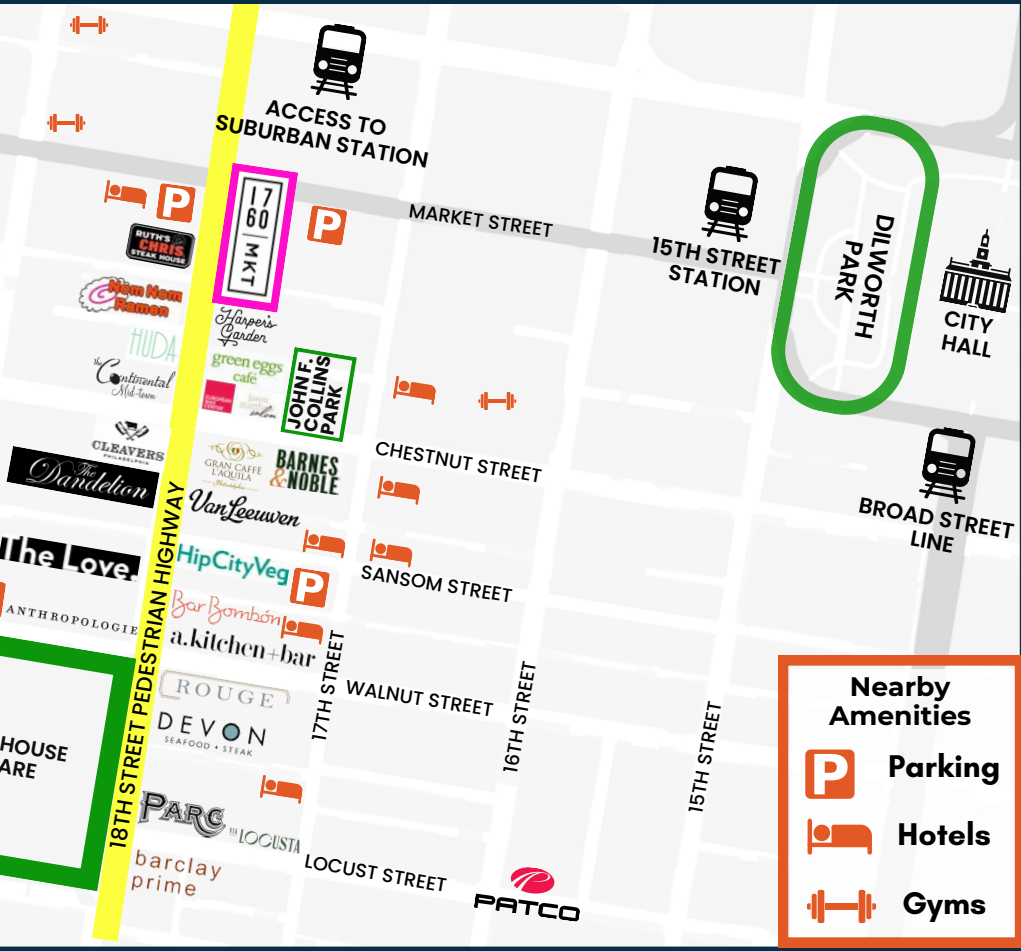
BUILDING AMENITIES

- Conference Center
- Bike Storage
- On-Site Management
- Tenant Lounge
- On-Site Banking
- 24/7 Security

Prime corner office building located directly on Philadelphia's "Pedestrian Highway"

RETAIL
NEW & COMING SOON

- EQUINOX
- Levain
- GLOWBAR
- WORLD OF FLIGHT
- ARITZIA
- SKIN LAUNDRY
- FLIGHT CLUB
- ayaa
- LUCY'S
- Reformation
- FIGS



WALK SCORE
100

TRANSIT SCORE
100

BIKE SCORE
82

Nearby Amenities

- Parking
- Hotels
- Gyms

Jacklyn Hadzor
609.760.9985
jhadzor@StocktonREA.com

Stockton Real Estate Advisors, LLC
1760 Market Street, Suite 900, Philadelphia, PA
215.636.4444 | www.StocktonREA.com

